

CT Coronary Angiogram

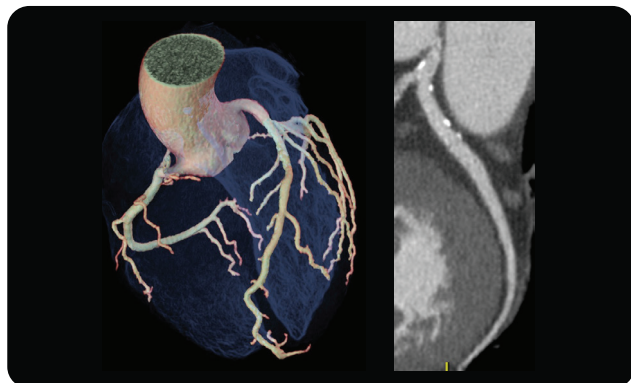
What is a CT Coronary Angiogram?

It is a procedure to look for any narrowing of the blood vessels in your heart. During the scan, a dye will be injected into your arm and a CT scan of your chest region is conducted to take images of your heart, which includes ionising radiation. The scan itself is very short (about 10 seconds), however, preparation before the actual scan may take some time.

At AsiaMedic, our CT scan machine features the latest in premium CT technology:

- Fastest rotating CT available¹ (capable of imaging the heart within 1 beat)
- Uses lower dose radiation
- Provides high-resolution images of coronary vessels
- Unique motion correction technology ensures high-quality images, even for complex patients or patients with high heart rates

"TrueFidelity™ DL was reported to achieve radiation dose reduction ranging from 38-96%"*



1. <https://www.gehealthcare.com/products/computed-tomography/revolution-family/revolution-apex-platform>

*the dose reduction evidence represents findings of the reported single centre study and is varied by clinical indication, study protocols and comparison method.

AsiaMedic Imaging Centre

Address:
350 Orchard Road #08-00
Shaw House
Singapore 238868

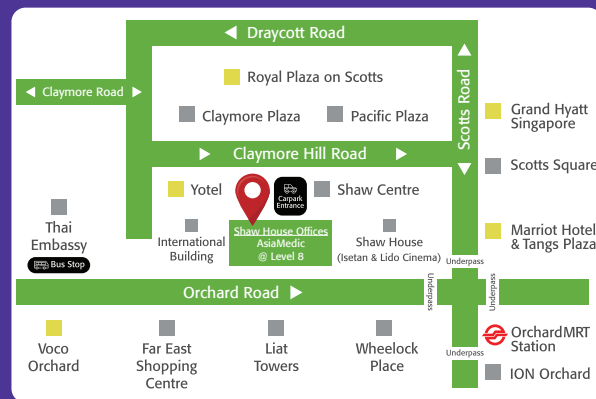
Operating Hours:
Mon to Fri: 8.30am to 5.30pm
Sat: 8.30am to 12.30pm
Sun and PH: Closed

Office Tel: (65) 6789 8888

WhatsApp: (65) 9863 0032

Website: <https://www.asiamedic.com.sg>

Email: info@asiamedic.com.sg



AsiaMedic Sunway Imaging

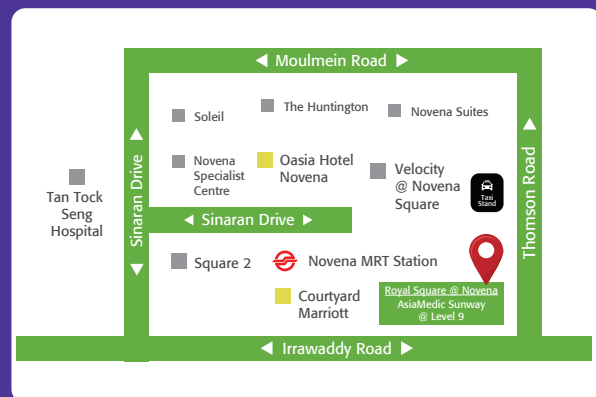
Address:
101 Irrawaddy Road #09-01
Royal Square Medical Centre
Singapore 329565

Operating Hours:
Mon to Fri: 8.30am to 5.30pm
Sat: 8.30am to 12.30pm
Sun and PH: Closed

Office Tel: (65) 6422 6688

WhatsApp: (65) 8339 9072

Email: info_novena@asiamedic.com.sg



CT Coronary Angiogram

Experience uncompromised image quality, the fastest rotation speed¹ and effortless workflow



Who should do a CTCA?

Men and women aged 40 and above, or individuals with symptoms of chest pain should get a CTCA. If you have co-existing risk factors, you should get screened even earlier.

Risk Factors



Smoking



Diabetes



High Blood Pressure



High Cholesterol



Family History

Why is a CTCA important?

Early detection: many heart conditions are asymptomatic until they reach an advanced stage. A CTCA can detect issues at an early stage when they are easier to treat.

Risk assessment: helps assess risk factors and underlying medical conditions, allowing cardiologists to tailor prevention strategies accordingly.

Prevention: with insights, you can take proactive steps to reduce your risk of heart disease (e.g. lifestyle changes/medication/further diagnostic tests).

How do I prepare for the CTCA?

Prior to your appointment, your doctor may prescribe certain medications. Please take these as prescribed.

- No fasting is required. You may take your routine prescribed medication as usual.
- Avoid any caffeinated drinks for 24 hours prior to your appointment.
- Please turn up at the reception counter 30 minutes prior to your appointment.
- Kindly inform the staff if you have asthma, multiple drug allergies, diabetes, or any allergy to iodine or contrast.
- If you are diabetic, we will need your blood creatinine results (within the past 3 months) before the examination.

You **must** inform the staff or doctor if you are pregnant or likely to be pregnant.

What should I expect on the day?

During the procedure:

- A cannula (small plastic tube) will be inserted into a blood vessel in your arm to prepare for injection of dye during the actual scan.
- If your heart rate is high, you will be given oral medication to lower it for clearer scan images. The medication may take up to an hour to take effect.
- Just before the scan starts, ECG electrodes will be placed on your chest to monitor your heart rate.
- You will undergo a CT calcium score test, which measures the amount of calcium in your coronary arteries.
- Thereafter, we will proceed with the CTCA, which will take only 10 seconds. To ensure the highest quality scan images, it's crucial to hold your breath during the scan.
- Our team will guide you through each step, ensuring a personalised examination with the lowest dose possible.



AsiaMedic Patient Portal

You may view your results through our patient portal, or review them with your doctor.



Scan the QR code to access our patient portal.

What should I do after my CTCA?

After the procedure:

- Do observe for any possible allergic reaction to the dye.
- If you experience any discomfort, please seek medical attention immediately.
- You may resume your normal activities otherwise.
- Drink plenty of water over the next few days to help remove the dye from your body.

The Revolution™ Apex Elite has the industry's fastest gantry rotation speed.¹ With a 160mm detector, a powerful tube and intelligent motion correction. It's enabled to deliver 1-beat, high-definition, motion free images no matter the heart rate

